

CX240E



## CRAWLER EXCAVATORS

### E-Series

#### ENGINE

Model \_\_\_\_\_ FPT NEF6  
 Type \_\_\_\_\_ Water-cooled, 4-cycle diesel, 6-cylinder  
 in line, High pressure common rail system (electric control),  
 Turbocharger with air cooled intercooler, SCRof, EGR free.  
 Number of cylinders / Displacement (l) \_\_\_\_\_ 6 / 6.7  
 Emissions level \_\_\_\_\_ Stage V  
 Bore & stroke (mm) \_\_\_\_\_ 104 x 132  
**Rated flywheel horse power**  
 ISO 9249 (kW) \_\_\_\_\_ 120.4 at 1800 min<sup>-1</sup>  
 ISO 14396 (kW) \_\_\_\_\_ 124.0 at 1800 min<sup>-1</sup>  
**Maximum torque**  
 ISO 9249 (Nm) \_\_\_\_\_ 644 at 1600 min<sup>-1</sup>  
 ISO 14396 (Nm) \_\_\_\_\_ 657 at 1600 min<sup>-1</sup>

#### HYDRAULIC SYSTEM

Main pumps \_\_\_\_\_ 2 variable displacement  
 axial piston pumps with regulating system  
 Max. oil flow (liter/min) \_\_\_\_\_ 2 x 211 at 1800 min<sup>-1</sup>  
**Working circuit pressure**  
 Boom/Arm/Bucket \_\_\_\_\_ 34.3 - 37.3 MPa with auto power boost  
 Swing circuit (MPa) \_\_\_\_\_ 29.4  
 Travel circuit (MPa) \_\_\_\_\_ 34.3  
 Pilot pump (liter/min) \_\_\_\_\_ 18  
 Working circuit pressure (MPa) \_\_\_\_\_ 3.9  
**Boom cylinders**  
 Bore (mm) \_\_\_\_\_ 120  
 Stroke (mm) \_\_\_\_\_ 1255  
**Boom positioning (2 piece boom only)**  
 Bore (mm) \_\_\_\_\_ 150  
 Stroke (mm) \_\_\_\_\_ 1090  
**Arm cylinder**  
 Bore (mm) \_\_\_\_\_ 140  
 Stroke (mm) \_\_\_\_\_ 1460  
**Bucket cylinder**  
 Bore (mm) \_\_\_\_\_ 120  
 Stroke (mm) \_\_\_\_\_ 1010

#### SWING

Swing motor \_\_\_\_\_ Fixed displacement axial piston motor  
 Maximum swing speed (min<sup>-1</sup>) \_\_\_\_\_ 11.5  
 Swing torque (Nm) \_\_\_\_\_ 64,000

#### WEIGHT AND GROUND PRESSURE

With 2.40 m arm, 1.0 m<sup>3</sup> bucket, operator, lubricant, coolant, full fuel tank and FOPS protection level 2.

	Weight	Ground pressure
<b>MONO</b>		
550 mm grouser shoes	23400 kg	0.051 MPa
<b>2 PIECE BOOM</b>		
550 mm grouser shoes	24300 kg	0.053 MPa

Counterweight 4600 kg

#### FILTERS

Suction filter (µm) \_\_\_\_\_ 105  
 Return filter (µm) \_\_\_\_\_ 6  
 Pilot line filter (µm) \_\_\_\_\_ 8

#### ELECTRICAL SYSTEM

Voltage (V) \_\_\_\_\_ 24  
 Alternator (Amp) \_\_\_\_\_ 90  
 Starter (V - kW) \_\_\_\_\_ 24 - 4.0  
 Battery \_\_\_\_\_ 2x12 V 92 Ah/5 HR

#### UNDERCARRIAGE

Travel motor \_\_\_\_\_ Variable displacement axial piston motor  
 High travel speed  
 (Automatic travel speed shifting) (km/h) \_\_\_\_\_ 5.2  
 Low travel speed (km/h) \_\_\_\_\_ 3.3  
 Drawbar pull (KN) \_\_\_\_\_ 188  
 Number of carrier rollers (each side) \_\_\_\_\_ 2  
 Number of track rollers (each side) \_\_\_\_\_ 8  
 Number of shoes (each side) \_\_\_\_\_ 49  
 Type of shoes \_\_\_\_\_ Triple grouser shoes  
 Grade ability \_\_\_\_\_ 70% (35°)

#### NOISE

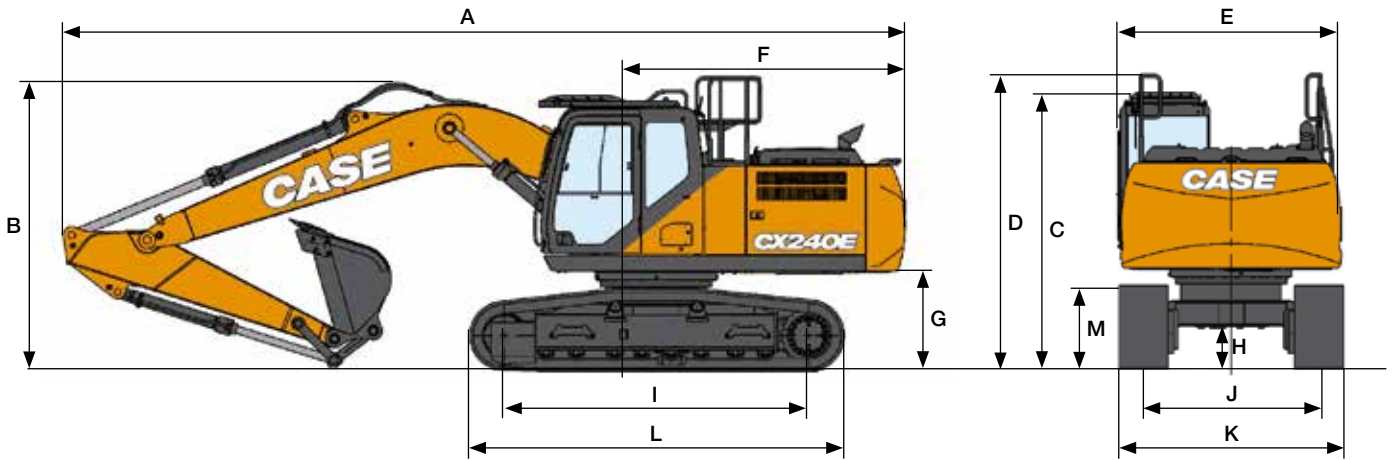
External guaranteed sound level  
 (EU Directive 2000/14/EC) (dB(A)) \_\_\_\_\_ LwA 101  
 Operator cab sound pressure level  
 (ISO 6396) (dB(A)) \_\_\_\_\_ LpA 68

#### CIRCUIT AND COMPONENT CAPACITIES

Fuel tank (l) \_\_\_\_\_ 320  
 Hydraulic system (l) \_\_\_\_\_ 265  
 Hydraulic tank (l) \_\_\_\_\_ 145  
 Adblue tank (l) \_\_\_\_\_ 60

# DIMENSIONS AND SPECIFICATIONS

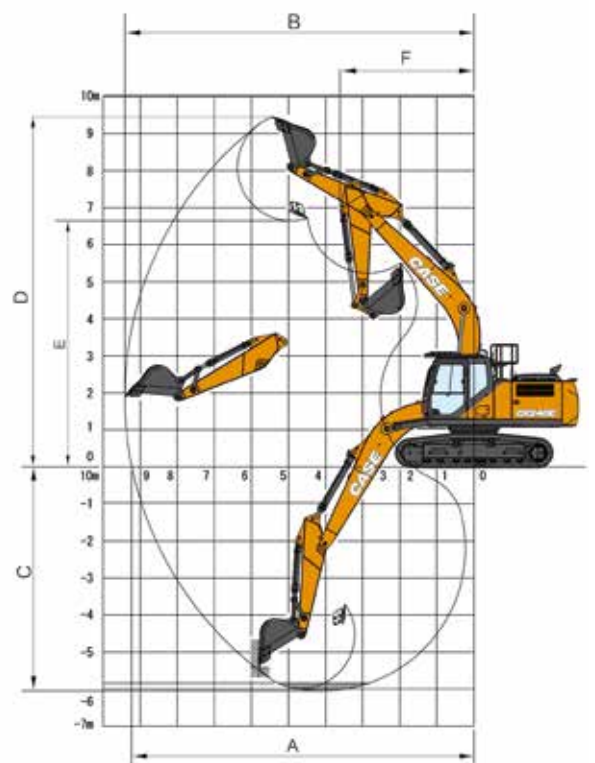
## CX240E NHD MONO



GENERAL DIMENSIONS		Arm 2.40 m	Arm 2.94 m
A	Overall length (without attachment)	mm 5220	5220
A1	Overall length (with attachment)	mm 9620	9530
B	Overall height (to top of boom)	mm 3200	2970
C	Cab height	mm 3130	3130
D	Overall height (to top of guardrail)	mm 3210	3210
E	Upper structure overall width	mm 2520	2520
F	Swing (rear end radius)	mm 2890	2890
G	Clearance height under upper structure	mm 1100	1100
H	Minimum ground clearance	mm 430	430
I	Wheel base (center to center of wheels)	mm 3840	3840
J	Track gauge	mm 1990	1990
K	Undercarriage overall width with 550 mm shoes	mm 2540	2540
L	Crawler overall length	mm 4650	4650
M	Crawler tracks height	mm 940	940

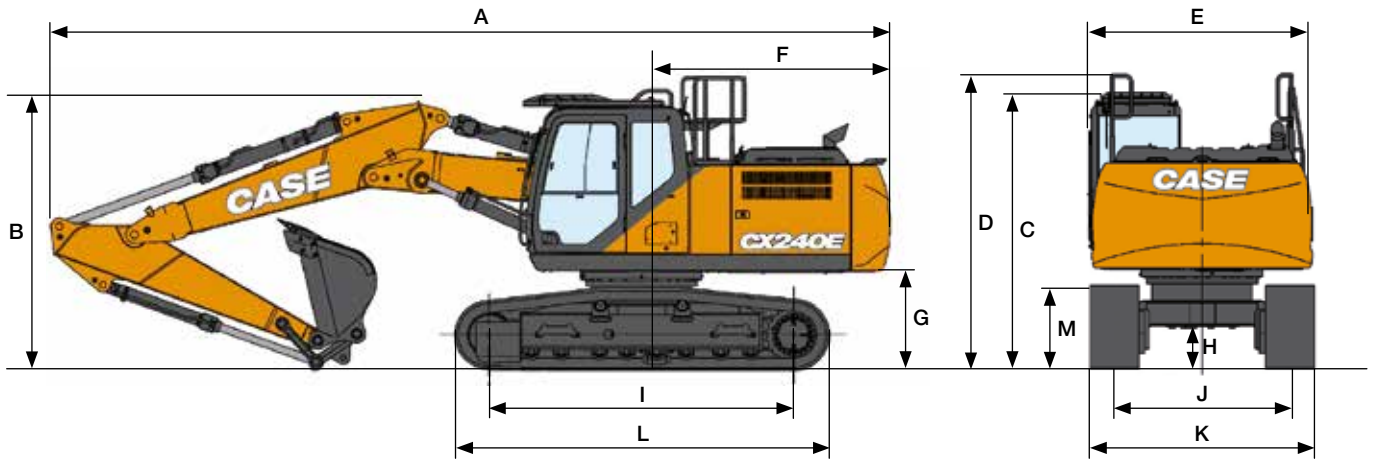
PERFORMANCE DATA		Arm 2.40 m	Arm 2.94 m
Boom length	mm	5700	5700
Bucket radius	mm	1450	1450
Bucket wrist action	°	177°	177°
A	Maximum reach at GRP	mm 9230	9720
B	Maximum reach	mm 9420	9900
C	Max. digging depth	mm 6050	6590
D	Max. digging height	mm 9450	9670
E	Max. dumping height	mm 6650	6870
F	Min. swing radius	mm 3620	3660

DIGGING FORCE		Arm 2.40 m	Arm 2.94 m
Arm digging force	kN	123	103
with Auto power boost	kN	133	112
Bucket digging force	kN	142	142
with Auto power boost	kN	154	154



# DIMENSIONS AND SPECIFICATIONS

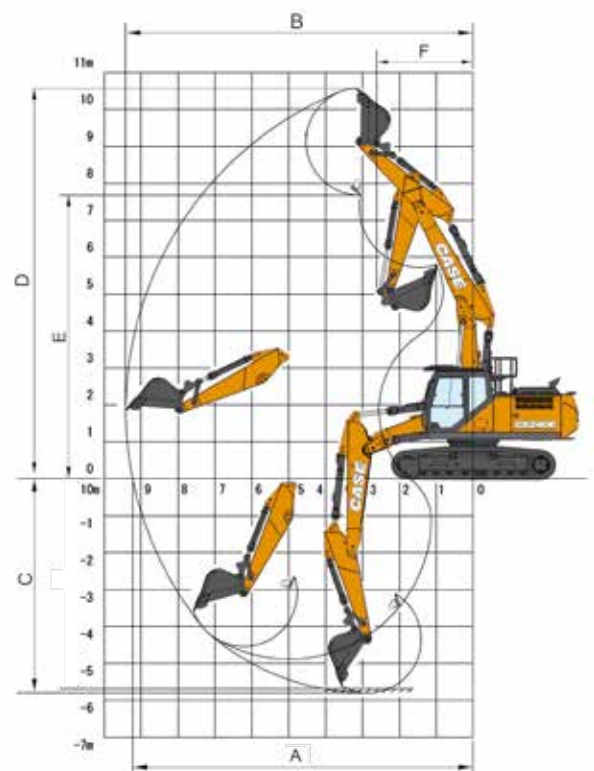
## CX240E NHD 2 PIECE BOOM



GENERAL DIMENSIONS		Arm 2.40 m	Arm 2.94 m
A Overall length (without attachment)	mm	5220	5220
A1 Overall length (with attachment)	mm	9600	9530
B Overall height (to top of boom)	mm	3050	2890
C Cab height	mm	3130	3130
D Overall height (to top of guardrail)	mm	3210	3210
E Upper structure overall width	mm	2520	2520
F Swing (rear end radius)	mm	2890	289
G Clearance height under upper structure	mm	1100	1100
H Minimum ground clearance	mm	430	430
I Wheel base (center to center of wheels)	mm	3840	3840
J Track gauge	mm	1990	1990
K Undercarriage overall width ( with 550 mm shoes)	mm	2540	2540
L Crawler overall length	mm	4650	4650
M Crawler tracks height	mm	940	940

PERFORMANCE DATA		Arm 2.40 m	Arm 2.94 m
1 <sup>st</sup> boom length	mm	2960	2960
2 <sup>nd</sup> boom length	mm	2790	2790
Bucket radius	mm	1450	1450
Bucket wrist action	°	177°	177°
A Maximum reach at GRP	mm	9220	9720
B Maximum reach	mm	9420	9900
C Max. digging depth	mm	5770	6290
D Max. digging height	mm	10610	10970
E Max. dumping height	mm	7710	8070
F Min. swing radius	mm	2620	2310

DIGGING FORCE		Arm 2.40 m	Arm 2.94 m
Arm digging force	kN	123	103
with Auto power boost	kN	133	112
Bucket digging force	kN	142	142
with Auto power boost	kN	154	154



# LIFTING CAPACITY

## CX240E NHD MONO

		REACH								
Front Side		2.0 m		4.0 m		6.0 m		At max reach		
										m
Short arm 2.40 m, 550 m shoes, max reach 7.97 m										
8.0 m								5900*	5900*	5.05
6.0 m						5560*	5120	5490*	4170	6.81
4.0 m			8500*	8500*		6290*	4890	5400*	3370	7.68
2.0 m			11640*	7850		7390*	4590	5740*	3100	7.97
0 m			12570*	7570		8110*	4390	5990	3160	7.74
-2.0 m	10290*	10290*	11850*	7610		7940*	4370	6580*	3650	6.95
-4.0 m			9300*	7890				6700*	5360	5.33

		REACH										
Front Side		2.0 m		4.0 m		6.0 m		8.0 m		At max reach		
												m
Standard arm 2.94 m, 550 m shoes, max reach 8.45 m												
8.0 m										4150*	4150*	5.79
6.0 m						5040*	5040*			3710*	3710*	7.37
4.0 m			7580*	7580*		5870*	5000	4740*	3230	3660*	3120	8.18
2.0 m			10920*	8090		7080*	4670	5710*	3120	3880*	2880	8.45
0 m			12510*	7650		8000*	4440	5730	3030	4420*	2920	8.24
-2.0 m	9550*	9550*	12270*	7600		8120*	4370			5610*	3300	7.50
-4.0 m	17200*	17200*	10350*	7800		6580*	4520			6520*	4490	6.03

# LIFTING CAPACITY

## CX240E NHD 2 PIECE BOOM

		REACH										
		0.0 m		2.0 m		4.0 m		6.0 m		At max reach		
Front	Side											m
Short arm 2.40 m, 550m shoes, max reach 7.97 m												
8.0 m						7270*	7270*			6260*	6260*	5.05
6.0 m						7450*	7450*	5750*	5280	4890*	4150	6.80
4.0 m						9670*	9150	6180*	5210	4470*	3320	7.68
2.0 m				10250*	10250*	12320*	8790*	7230*	4990	4470*	3030	7.97
0 m				15630*	15630*	12390*	8220	8060*	4620	4840*	3090	7.74
-2.0 m	17500*	17500*		25000*	25000*	12640*	7890	7650*	4380	5080*	3580	6.94
-4.0 m				18360*	18360*	8380*	7870					

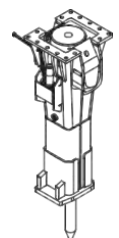
		REACH												
		0.0 m		2.0 m		4.0 m		6.0 m		8.0 m		At max reach		
Front	Side													m
Standard arm 2.94 m, 550m shoes, max reach 8.45 m														
8.0 m												4200*	4200*	5.79
6.0 m								5400*	5390			3720*	3720*	7.37
4.0 m				17210*	17210*	8660*	8660*	5850*	5290*	4310*	3210	3660*	3070	8.18
2.0 m				18170*	18170*	12050*	8900	6860*	5150	4890*	3120	3850*	2820	8.45
0 m	12740*	12740*		15350*	15350*	12390*	8420	8060*	4770	5060*	2990	4320*	2850	8.24
-2.0 m	14150*	14150*		20750*	20750*	12600*	7950	8090*	4440			5010*	3230	7.50
-4.0 m				22370*	22370*	10520*	7820							

# HAMMER

## CX240E

### DIRECT FIT

Model	Instal weight kg	Reference machine setting			Arm 2.40 m	Arm 2.94 m
		Flow l/min	Relief pressure MPa			
<b>CB BREAKER</b>						
CB240S	1150	111	19-21	<input type="checkbox"/>	<input type="checkbox"/>	
CB290S	1500	146	21-22	<input type="checkbox"/>	<input type="checkbox"/>	



Applicable  
— Not applicable

Applicable with condition  
(only light duty works as residential construction or utilities maintenance)

# BUCKETS (PRELIMINARY)

## CX240E NHD MONO



### DIRECT FIT

Capacity m <sup>3</sup> (ISO7451 HEAPED)	Width mm	Weight kg	Arm 2.40 m	Arm 2.94 m
<b>GENERAL PURPOSE BUCKETS</b>				
0.44	600	540	○	○
0.59	750	610	○	○
0.75	900	660	○	○
0.85	1000	700	○	●
0.96	1100	750	●	●
1.01	1200	790	●	■
1.23	1350	870	■	■
1.39	1500	930	—	—

Capacity m <sup>3</sup> (ISO7451 HEAPED)	Width mm	Weight kg	Arm 2.40 m	Arm 2.94 m
<b>HEAVY DUTY BUCKETS</b>				
0.44	600	590	○	○
0.59	750	640	○	○
0.75	900	720	○	○
0.85	1000	760	○	●
0.96	1100	800	●	●
1.01	1200	850	●	■
1.23	1350	920	■	■
1.39	1500	1000	—	—

Capacity m <sup>3</sup> (ISO7451 HEAPED)	Width mm	Weight kg	Arm 2.40 m	Arm 2.94 m
<b>ROCK BUCKETS</b>				
0.44	600	610	○	○
0.59	750	670	○	○
0.75	900	740	○	○
0.85	1000	780	○	●
0.96	1100	820	●	●
1.01	1200	890	●	■
1.23	1350	940	■	—

Capacity m <sup>3</sup> (ISO7451 HEAPED)	Width mm	Weight * kg	Arm 2.40 m	Arm 2.94 m
<b>90° TILT DITCH CLEANING BUCKETS</b>				
0.56	1500	710	○	○
0.68	1800	770	○	○
0.75	2000	810	○	●
0.83	2200	880	●	●
0.91	2400	920	●	■
0.95	2500	950	■	■

Tilt angle 45° L/R - Connect to Low-Flow Auxiliary Hydraulic Circuit

Capacity m <sup>3</sup> (ISO7451 HEAPED)	Width mm	Weight * kg	Arm 2.40 m	Arm 2.94 m
<b>DITCH CLEANING BUCKETS</b>				
0.86	1830	520	○	○
		650*	○	○
0.94	2130	570	○	●
		710*	●	●

\* with bolt-on cutting edge

○ Rated material density up to 2 ton/m<sup>3</sup>  
● Rated material density up to 1.6 ton/m<sup>3</sup>



### QUICK COUPLED

Capacity m <sup>3</sup> (ISO7451 HEAPED)	Width mm	Weight kg	Arm 2.40 m	Arm 2.94 m
<b>GENERAL PURPOSE BUCKETS</b>				
0.44	600	520	○	○
0.59	750	580	○	○
0.75	900	650	○	●
0.85	1000	680	●	●
0.96	1100	730	■	■
1.01	1200	770	■	■
1.23	1350	850	—	—

Capacity m <sup>3</sup> (ISO7451 HEAPED)	Width mm	Weight kg	Arm 2.40 m	Arm 2.94 m
<b>HEAVY DUTY BUCKETS</b>				
0.44	600	580	○	○
0.59	750	630	○	○
0.75	900	710	○	●
0.85	1000	750	●	■
0.96	1100	790	■	■
1.01	1200	840	■	—
1.23	1350	910	—	—

Capacity m <sup>3</sup> (ISO7451 HEAPED)	Width mm	Weight kg	Arm 2.40 m	Arm 2.94 m
<b>ROCK BUCKETS</b>				
0.44	600	600	○	○
0.59	750	650	○	○
0.75	900	730	○	●
0.85	1000	770	●	■
0.96	1100	800	■	■
1.01	1200	880	■	—
1.23	1350	930	—	—

Capacity m <sup>3</sup> (ISO7451 HEAPED)	Width mm	Weight * kg	Arm 2.40 m	Arm 2.94 m
<b>DITCH CLEANING BUCKETS</b>				
0.86	1830	560	●	●
		690*	●	●
0.94	2130	610	●	■
		750*	●	■

\* with bolt-on cutting edge

■ Rated material density up to 1.2 ton/m<sup>3</sup>  
— Not applicable

# BUCKETS (PRELIMINARY)

## CX240E NHD 2 PIECE BOOM



### DIRECT FIT

Capacity m <sup>3</sup> (ISO7451 HEAPED)	Width mm	Weight kg	Arm 2.40 m	Arm 2.94 m
<b>GENERAL PURPOSE BUCKETS</b>				
0.44	600	540	○	○
0.59	750	610	○	○
0.75	900	660	○	○
0.85	1000	700	○	●
0.96	1100	750	●	●
1.01	1200	790	●	■
1.23	1350	870	■	—
1.39	1500	930	—	—

Capacity m <sup>3</sup> (ISO7451 HEAPED)	Width mm	Weight kg	Arm 2.40 m	Arm 2.94 m
<b>HEAVY DUTY BUCKETS</b>				
0.44	600	518	○	○
0.59	750	574	○	○
0.75	900	642	○	○
0.85	1000	680	○	●
0.96	1100	730	●	●
1.01	1200	767	●	■
1.23	1350	846	■	—
1.39	1500	1000	—	—

Capacity m <sup>3</sup> (ISO7451 HEAPED)	Width mm	Weight kg	Arm 2.40 m	Arm 2.94 m
<b>ROCK BUCKETS</b>				
0.44	600	610	○	○
0.59	750	670	○	○
0.75	900	740	○	○
0.85	1000	780	○	●
0.96	1100	820	●	■
1.01	1200	890	●	■
1.23	1350	940	■	—

Capacity m <sup>3</sup> (ISO7451 HEAPED)	Width mm	Weight * kg	Arm 2.40 m	Arm 2.94 m
<b>90° TILT DITCH CLEANING BUCKETS</b>				
0.56	1500	710	○	○
0.68	1800	770	○	○
0.75	2000	810	○	●
0.83	2200	880	●	■
0.91	2400	920	■	■
0.95	2500	950	■	■

Capacity m <sup>3</sup> (ISO7451 HEAPED)	Width mm	Weight * kg	Arm 2.40 m	Arm 2.94 m
<b>DITCH CLEANING BUCKETS</b>				
0.86	1830	520	○	○
		650*	○	●
0.94	2130	570	○	●
		710*	●	●

\* with bolt-on cutting edge

○ Rated material density up to 2 ton/m<sup>3</sup>  
● Rated material density up to 1.6 ton/m<sup>3</sup>



### QUICK COUPLED

Capacity m <sup>3</sup> (ISO7451 HEAPED)	Width mm	Weight kg	Arm 2.40 m	Arm 2.94 m
<b>GENERAL PURPOSE BUCKETS</b>				
0.44	600	520	○	○
0.59	750	580	○	○
0.75	900	650	○	●
0.85	1000	680	●	●
0.96	1100	730	■	■
1.01	1200	770	■	■
1.23	1350	850	—	—

Capacity m <sup>3</sup> (ISO7451 HEAPED)	Width mm	Weight kg	Arm 2.40 m	Arm 2.94 m
<b>HEAVY DUTY BUCKETS</b>				
0.44	600	580	○	○
0.59	750	630	○	○
0.75	900	710	○	●
0.85	1000	750	●	■
0.96	1100	790	■	■
1.01	1200	840	■	—
1.23	1350	910	—	—

Capacity m <sup>3</sup> (ISO7451 HEAPED)	Width mm	Weight kg	Arm 2.40 m	Arm 2.94 m
<b>ROCK BUCKETS</b>				
0.44	600	600	○	○
0.59	750	650	○	○
0.75	900	730	○	○
0.85	1000	770	●	●
0.96	1100	800	●	■
1.01	1200	880	■	■
1.23	1350	930	■	—

Capacity m <sup>3</sup> (ISO7451 HEAPED)	Width mm	Weight * kg	Arm 2.40 m	Arm 2.94 m
<b>DITCH CLEANING BUCKETS</b>				
0.86	1830	560	●	●
		690*	●	■
0.94	2130	610	●	■
		750*	■	■

\* with bolt-on cutting edge

■ Rated material density up to 1.2ton/m<sup>3</sup>  
— Not applicable

# BUILDING A STRONG CASE.

Since 1842, at CASE Construction Equipment we have lived by an unwavering commitment to build practical, intuitive solutions that deliver both efficiency and productivity.

We continually strive to make it easier for our customers to implement emerging technologies and new compliance mandates.

Today, our global scale combined with our local expertise enables us to keep customers' real-world challenges at the center of our product development.

The vast CASE dealers' network is always ready to support and protect your investment and exceed your expectations, while also providing you with the ultimate ownership experience.

Our goal is to build both stronger machines-and stronger communities. At the end of the day, we do what's right for our customers and our communities so that they can count on CASE.

---

**CNH Industrial**  
Deutschland GmbH  
Case Baumaschinen  
Benzstr. 1-3 - D-74076 Heilbronn  
DEUTSCHLAND

**CNH Industrial**  
Maquinaria Spain, S.A.  
Avenida Aragón 402  
28022 Madrid - ESPAÑA

**CNH Industrial France, S.A.**  
16-18 Rue des Rochettes  
91150 Morigny-Champigny  
FRANCE

**CNH Industrial Italia Spa**  
via Plava, 80  
10135 Torino  
ITALIA

**CASE Construction Equipment**  
Cranes Farm Rd  
Basildon - SS14 3AD  
UNITED KINGDOM

---

NOTE: Standard and optional fittings can vary according to the demands and specific regulations of each country. The illustrations may include optional rather than standard fittings - consult your Case dealer. Furthermore, CNH Industrial reserves the right to modify machine specifications without incurring any obligation relating to such changes.

Conforms to directive 2006/42/EC

**CASECE.COM**  
**00800-2273-7373**

The call is free from a land line.  
Check in advance with your Mobile Operator if you will be charged. Toll free number not available from all calling areas.

